

Charging Base

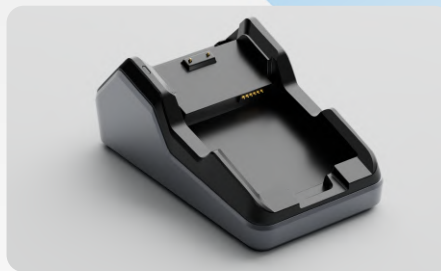
M20 Family



SPECIFICATIONS



Basic Charging Base
(Terminal Only)



Standard Charging Base
(1 terminal + 1 battery)



Communication Base

Power supply	5V DC 2A (USB-C Charging)	Power supply	19V DC 2.1A DC Port	Power supply	19V DC 2.1A DC Port
Environment Editor	Operating temperature: 0°C to +40°C Storage temperature: -20°C to +70°C Operating humidity: 10% to 90% non-condensing	Environment Editor	Operating temperature: 0°C to +40°C Storage temperature: -20°C to +70°C Operating humidity: 10% to 90% non-condensing	Environment Editor	Operating temperature: 0°C to +40°C Storage temperature: -20°C to +70°C Operating humidity: 10% to 90% non-condensing
Dimensions	156.3×93.8×68.6mm (L×W×H)	Dimensions	156.3×93.8×68.6mm (L×W×H)	Dimensions	156.3×93.8×68.6mm (L×W×H)
Led for battery charging	None	Led for battery charging	Red: The battery is not connected Blue: The battery is charging Green: The battery is fully charged	Led for battery charging	Red: The battery is not connected Blue: The battery is charging Green: The battery is fully charged
Port	None	Port	None	Port	RJ45 Ethernet, RJ22 Serial, USB Type A USB-Type C (Communication only)

LAMDI

This document is not binding and the specifications above can be modified without prior consent.

